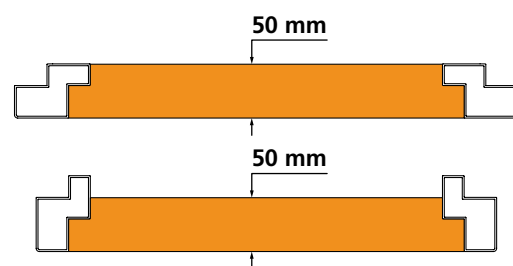


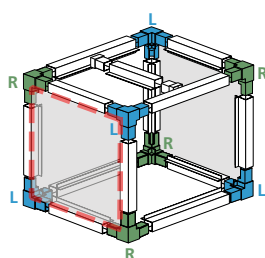
Double-walled system with double height profiles

Panel 50 mm

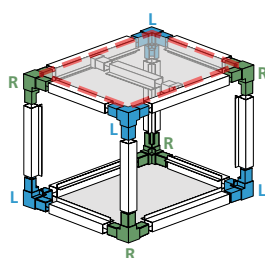


Designed for specific manufacturing needs, where it is useful to have different openings in the frame. With this structure model it is possible to build AHU with continuous internal surface, using double wall panels. This is a system complete with manufacturing elements from the profile to the corner couple to the omega equipped with a specific joint. This particular solution uses 50 mm / 1.97" double wall panels.

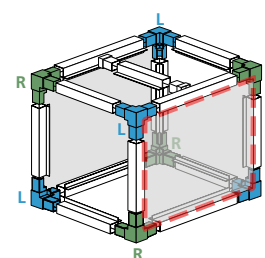
Details



Maximum opening

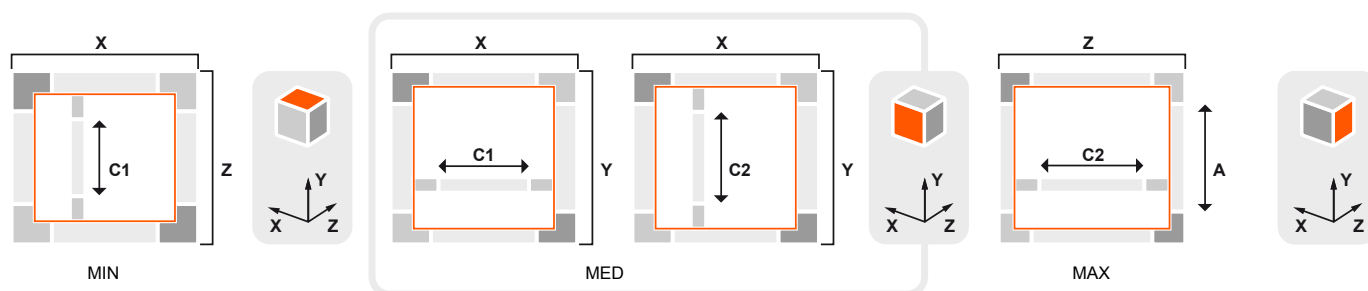


Average opening



Minimum opening

Cutting conditions of the profiles




A	= for all sides: X, Y and Z - 140 mm / 5,46"
C1	= for the sides of MIN and AVERAGE opening: Z and X -160mm / 6.24"
C2	= for the sides of the AVERAGE and MAX opening: Y and Z -120mm / 4.68"

X, Y and Z = external overall dimensions
MIN = minimum opening
AVERAGE = average opening
MAX = maximum opening

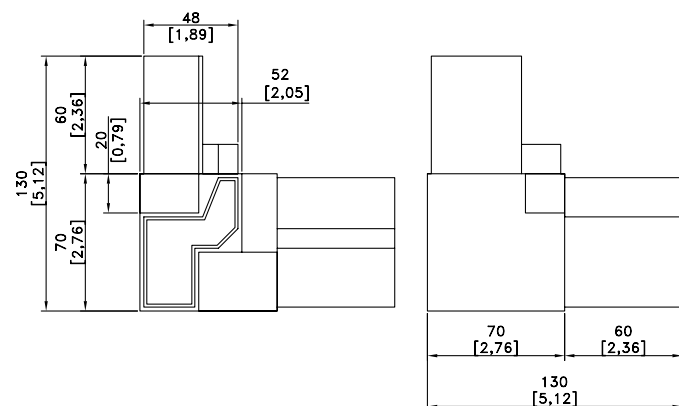
The formulas differentiate side by side of the module.

For cutting of the profiles, pay very close attention to the average opening side

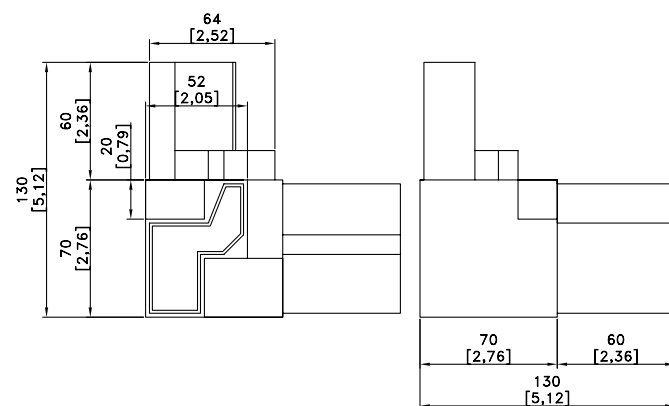
Aluminium accessories

ADH50-50-S Main left corner	ADH50-50-D Main right corner	TECHNICAL DATA	
		Panel thickness	50 mm / 1.95"
Weight: 450 g	Weight: 450 g	Material	EN AB 46100
		Color	RAL

ADH50-50-S



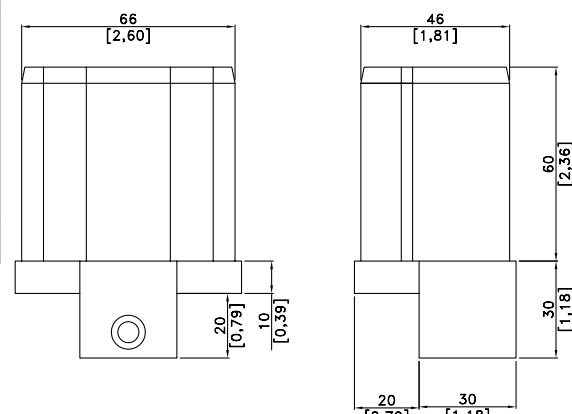
ADH50-50-D



GDH-500000 Omega joint

Weight: 200 g

GDH-500000



Aluminium profiles

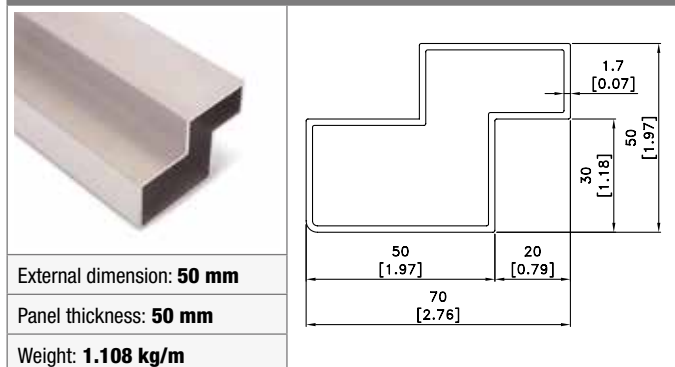
TECHNICAL DATA

Material: Extruded aluminium EN AW 6060

Treatment: T6

Color: RAL

PDH150-510 Main profile



PDH250-510 Omega profile

