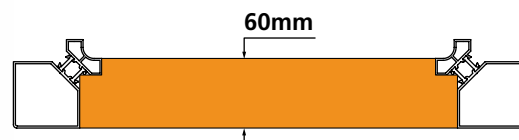


Internally rounded thermal break system

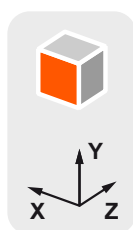
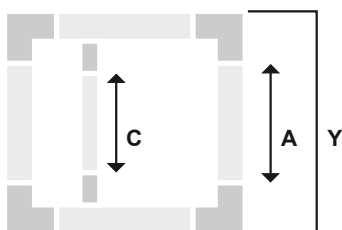
Panel thickness 60 mm
External dimension 60 mm



The thermal break is the best method to contrast the temperature differences between the inside and outside of the unit. Mainly used in those environments where extreme climatic conditions exist, it avoids the formation of condensate inside the chambers.

The thermal break series is in continuous growth, in order to satisfy the most different needs of manufacturers with the APS Arosio quality.

Cutting conditions of the profiles




$$A = Y - 160 \text{ mm} / 6.24''$$

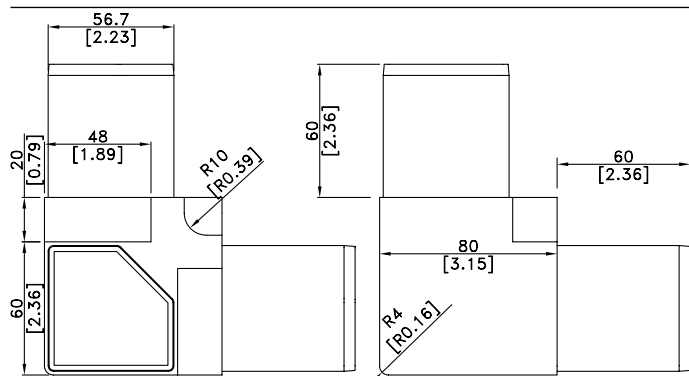
$$C = Y - 160 \text{ mm} / 6.24''$$

The formulas are valid for all sides of the module
Y = external dimension

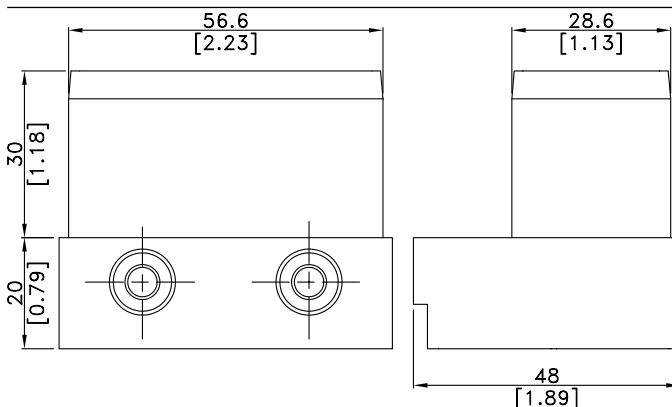
Nylon accessories

AFGPA60-45 Main corner	GFGTT60-45 Omega joint	TECHNICAL DATA	
		Panel thickness	60 mm / 2.36"
Weight: 246 g	Weight: 38 g	Material	PA6 + GF 20%
		Color	Black

AFGPA60-45



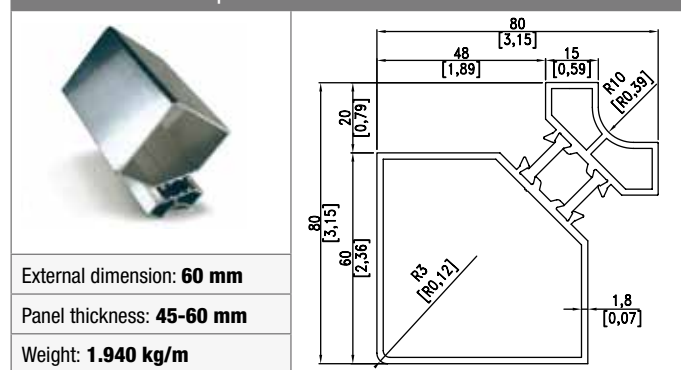
GFGTT60-45



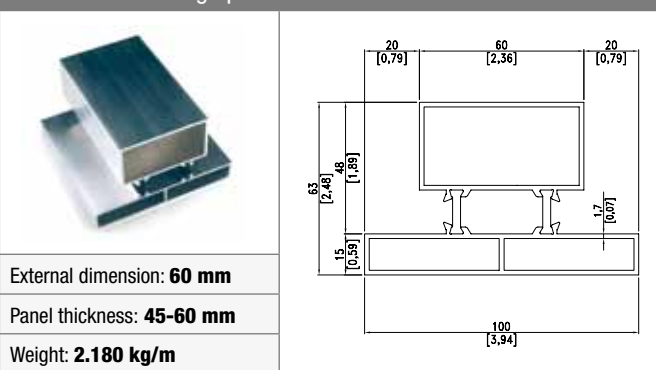
Thermal break aluminium profiles

TECHNICAL DATA		Treatment	T6
Material	Extruded aluminium EN AW 6060	Color	RAL

PTTA160-45 Main profile

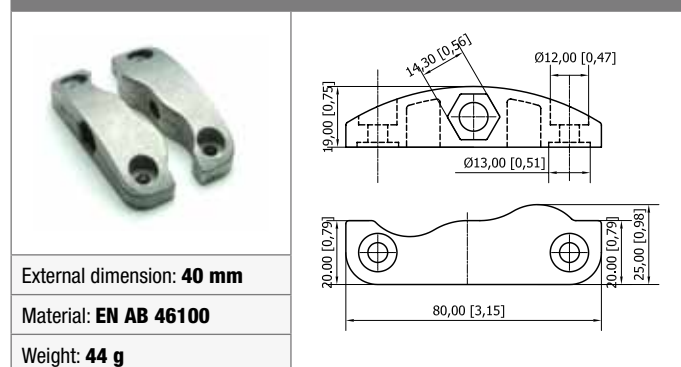


PTT260-450 Omega profile without channel



Unit connection

TH5009-000 Unit connection with screws



GU-9000000 90° Unit connection

