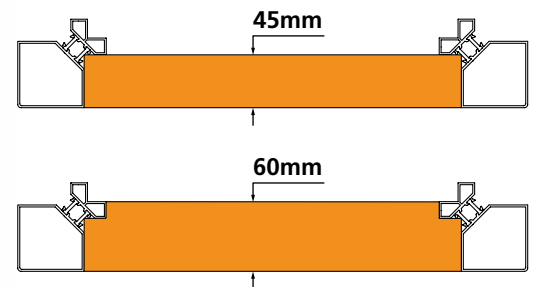


## Thermal break system

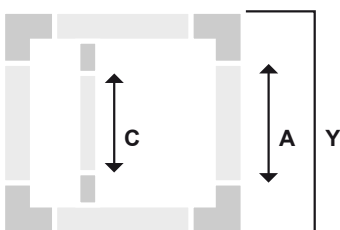
Panel thickness 45-60 mm  
External dimension 60 mm



The thermal break is the best method to contrast the temperature differences between the inside and outside of the unit. Mainly used in those environments where extreme climatic conditions exist, it avoids the formation of condensate inside the chambers.

The thermal break series is in continuous growth, in order to satisfy the most different needs of manufacturers with the APS Arosio quality.

### Cutting conditions of the profiles




$$A = Y - 160 \text{ mm} / 6.24''$$

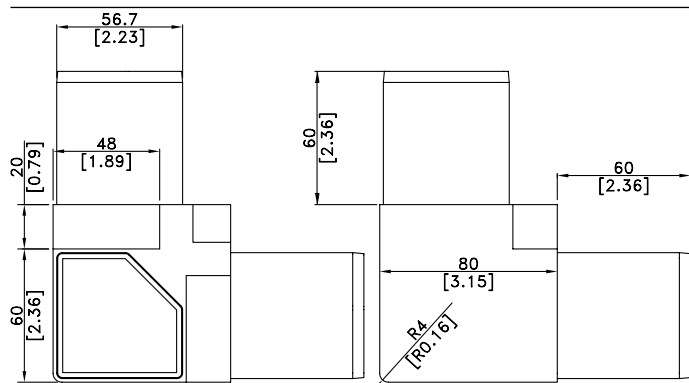
$$C = Y - 160 \text{ mm} / 6.24''$$

The formulas are valid for all sides of the module  
Y = external dimension

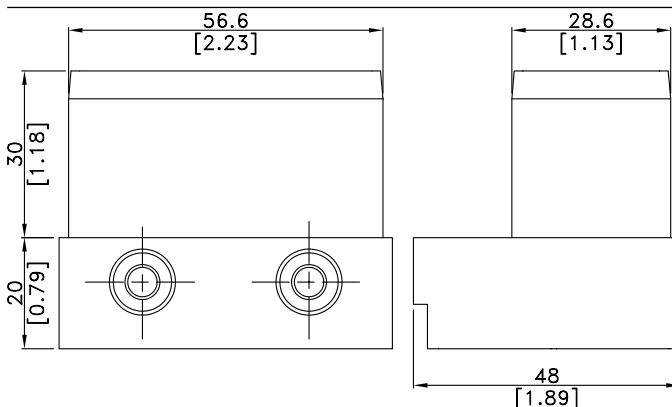
## Nylon accessories

AFGDP60-45 Main corner	GFGTT60-45 Omega joint	TECHNICAL DATA	
		Panel thickness	45-60 mm / 1.76-2.34"
		Material	PA6 + GF 20%
		Color	Black
Weight: <b>245 g</b>	Weight: <b>38 g</b>		

### AFGDP60-45



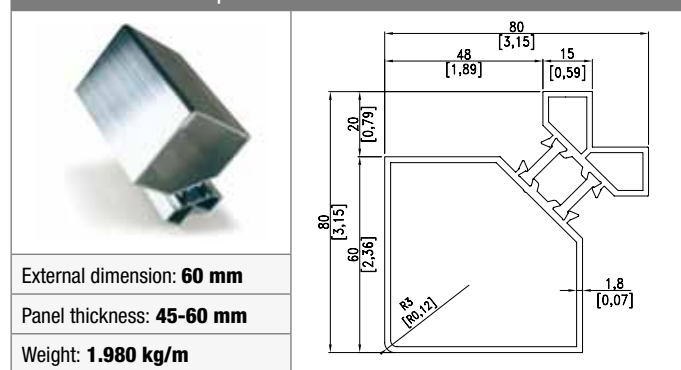
### GFGTT60-45



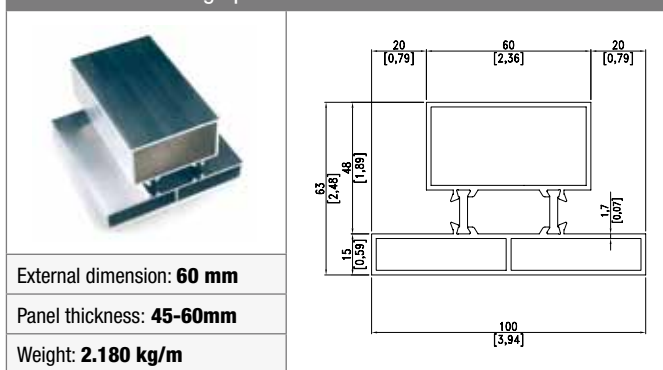
## Thermal break aluminium profiles

TECHNICAL DATA	
Material	Extruded aluminium EN AW 6060
Treatment	T6
Color	RAL

#### PTT160-450 Main profile

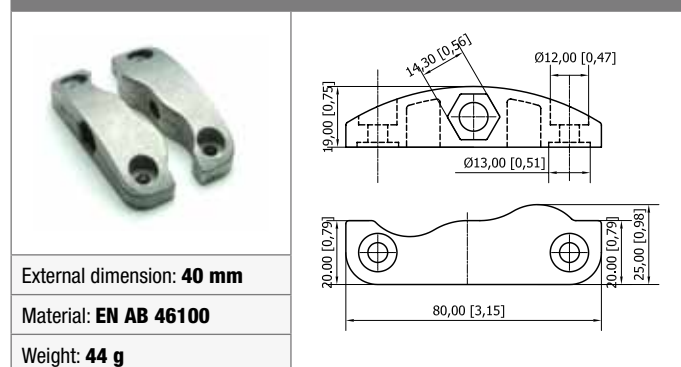


#### PTT260-450 Omega profile without channel



## Unit connection

#### TH5009-000 Unit connection with screws



#### GU-9000000 90° Unit connection

