

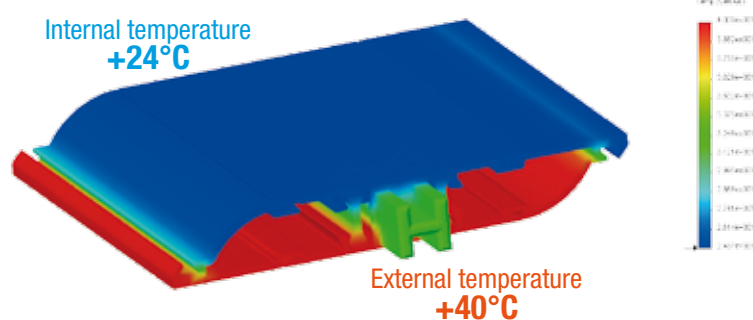
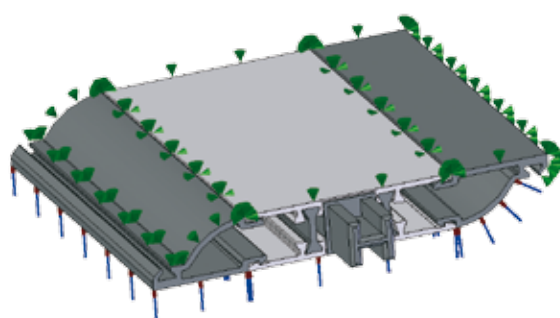
CLASS 2 damper with thermal break blades



Built with the same components of the standard frame, it introduces a blade profile with thermal break to improve the total power efficiency. Blade PS100TT-00 enables a reduction of the thermal exchange on 90% of the surface, maintaining the same assembly system for the damper. This profile, which has the same sizes as the PS10000000 blade profile, includes a thermal break aluminium profile assembled with two PA 6.6 profiles.

The special coupling system between the elements of the blade preclude the possibility of realase both in the cutting phase that during the use of the damper. Hence no special precautions is needed with respect to the current procedure for assembly of other APS Arosio's dampers.

The gaskets, specifically designed for the blade profiles of APS Arosio dampers, resist a large temperature range. Its particular design assures a better anchoring system: gaskets can in fact be assembled to the profile both by clicking or sliding it into place, thus making the replacement procedure very easy.

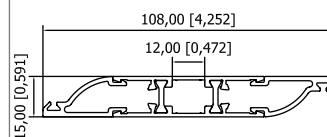


Aluminium profiles

TECHNICAL DATA

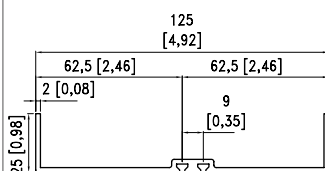
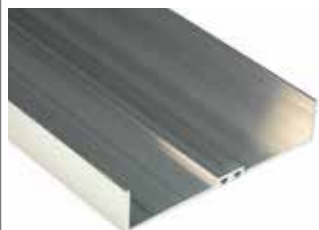
Max profile lenght	6000 mm / 234"
Material	EN AW 6060
Finish	Natural / Painted / Oxidized
Treatment	T6
Color	RAL

PS100TT-00 Blade profile



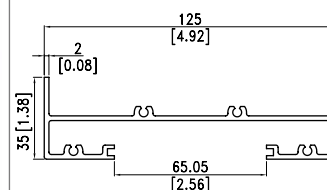
Weight: **1.019 kg/m**

PS11000000 Top-bottom profile



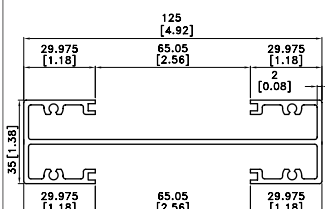
Weight: **1.063 kg/m**

PS12000000 Shoulder profile



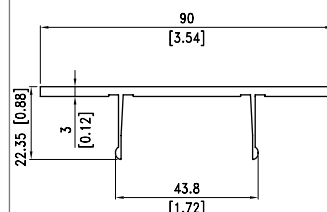
Weight: **1.662 kg/m**

PS13000000 Intermediate profile



Weight: **2.028 kg/m**

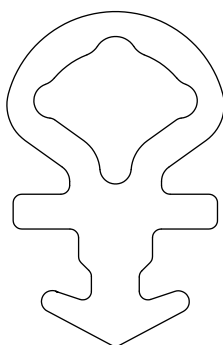
P.M.S.80000 Profile for motor



Weight: **0.832 kg/m**

Gaskets

GUAR.TPE05 Tubular gasket



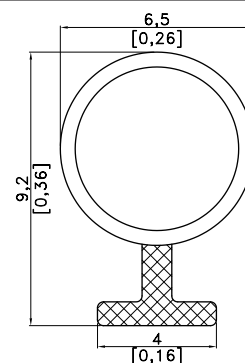
Material: **TPE-V**

Working temp.: **-30°C / +120°C**

Peak temp.: **-40°C / +135°C**

Color: **Black**

GA.1200000 Tubular gasket



Material: **TPE-V and PP**

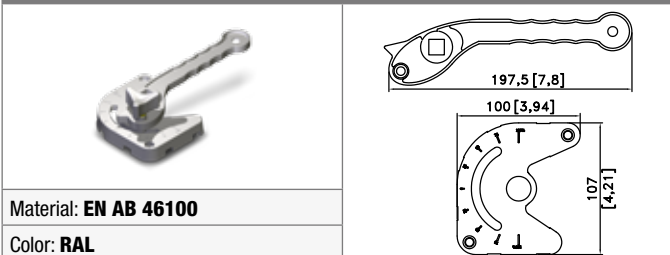
Working temp.: **-30°C / +120°C**

Peak temp.: **-40°C / +135°C**

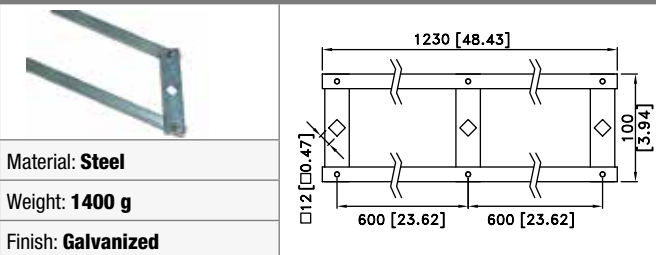
Color: **Black**

Accessories

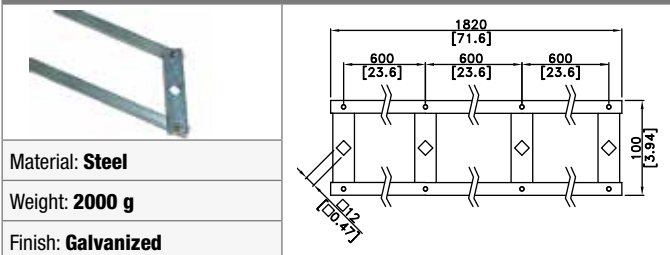
MPS2012000 Handle



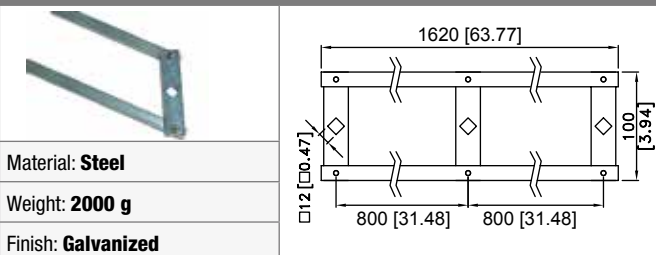
LEV.LUNG00 Leverage for dual control



LEV.1820.4 Leverage for dual control



LEV.1600.3 Leverage for dual control



Control shaft / Transmission shaft



Technical data

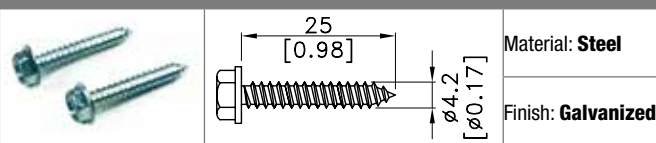
Dimensions

Material: Steel	PFE1200000 A = 120 mm	PFE2100000 A = 210 mm
Finish: Galvanized	PFE1600000 A = 160 mm	PFE3000000 A = 300 mm
	PFE1900000 A = 190 mm	PFE3700000 A = 370 mm

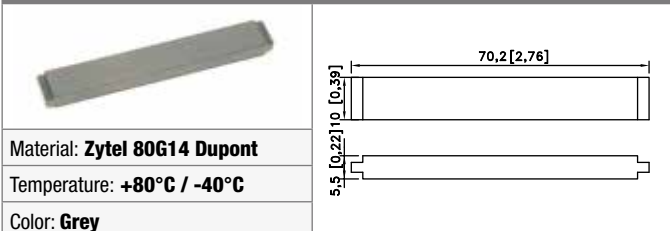
PFE120.F80 Leverage shaft



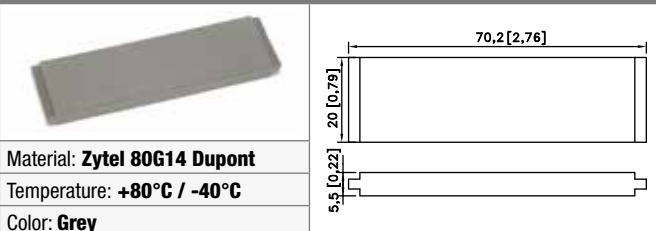
VTE1000000 Screw



S.10-ZYTEL 10 mm thickness



S.20-ZYTEL 20 mm thickness



CPS2007000 Blades mechanism for low temperatures

