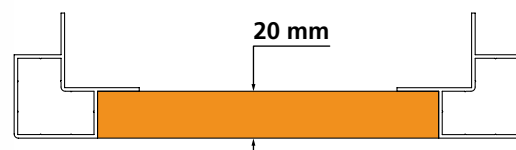


Standard system with aluminium corners

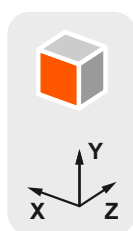
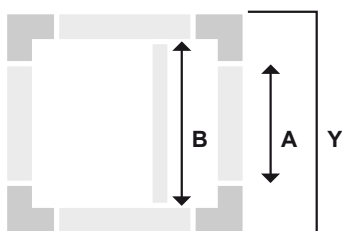
Panel thickness 20 mm
External dimension 40 mm



The APS Arosio system is born here.

The standard structure has simple lip profiles available and offers a wide range of combinations. Thanks to its simplicity, it is confirmed among the most used systems by those who deal in AHU. Use practicality and versatility make this system the reference point of all the manufacturers.

Cutting conditions of the profiles



$$A = Y - 120 \text{ mm} / 4.68''$$

$$B = Y - 80 \text{ mm} / 3.12''$$

The formulas are valid for all sides of the module
Y = external dimension

Aluminium accessories

TECHNICAL DATA

Panel thickness
20 mm / 0.78"

Material
EN AB 46100

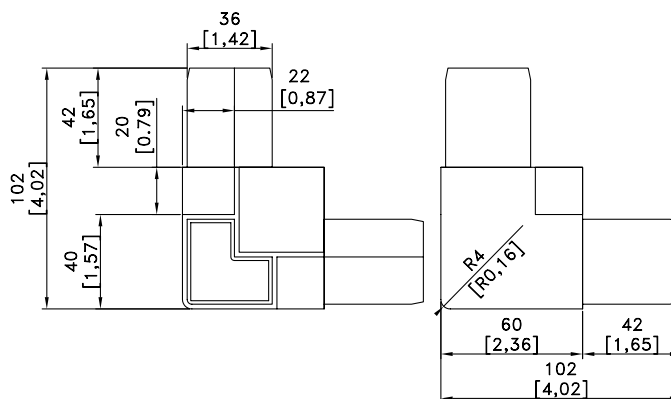
Color
RAL

AC430-2000

Main corner



Weight: **330 g**



Aluminium profiles

TECHNICAL DATA

Material
Extruded aluminium EN AW 6060

Treatment
T6

Color
RAL

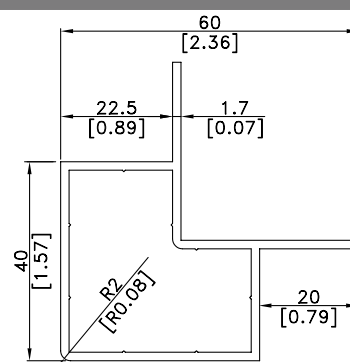
P140-20000 Main profile



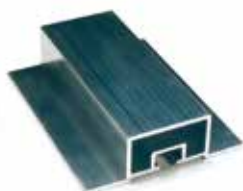
External dimension: **40 mm**

Panel thickness: **20 mm**

Weight: **0.950 kg/m**



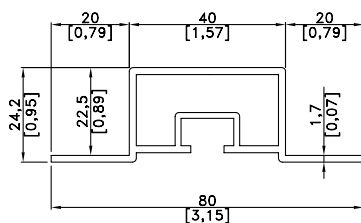
P240-20000 Omega profile with channel



External dimension: **40 mm**

Panel thickness: **20 mm**

Weight: **0.900 kg/m**



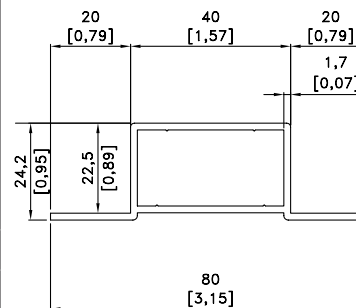
P340-20000 Omega profile without channel



External dimension: **40 mm**

Panel thickness: **20 mm**

Weight: **0.700 kg/m**



Unit connection

TH5009-000 Unit connection with screws



External dimension: **40 mm**

Material: **EN AB 46100**

Weight: **44 g**

